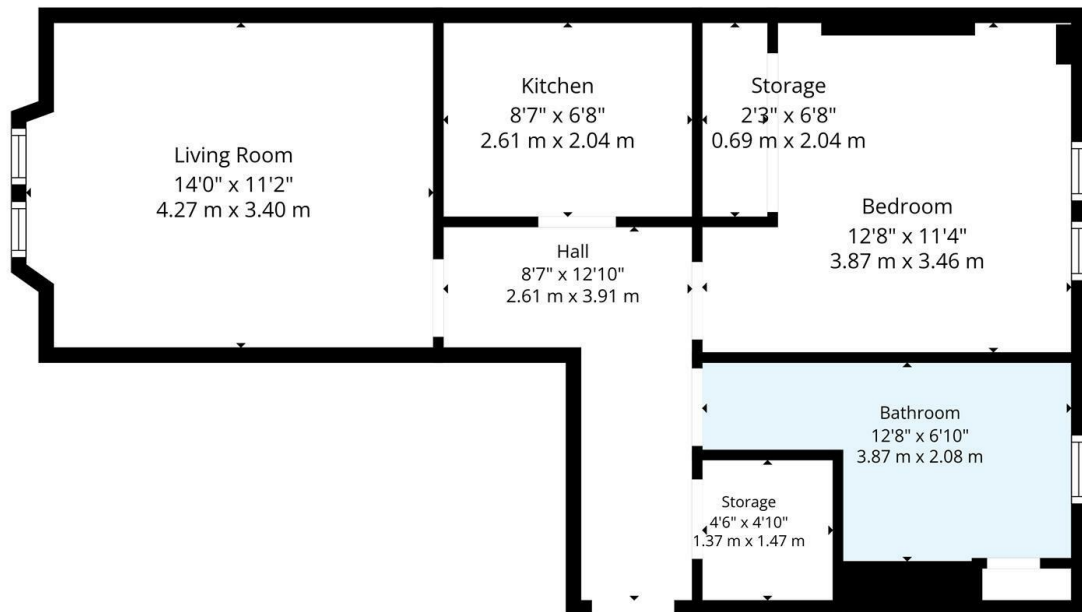




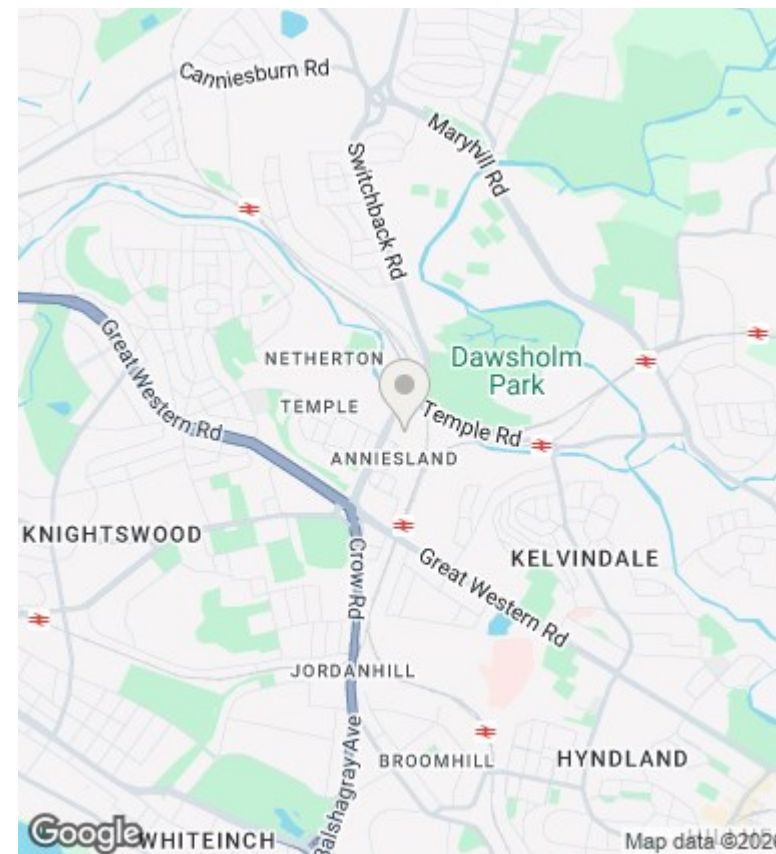
## 1/3, 1025 Crow Road, Glasgow, G13 1JP

Offers Over £120,000

- Great location in Anniesland
- Modern internal kitchen
- Security entry into communal close
- EER Band C
- Well presented one bedroom first floor apartment
- Spacious modern bathroom
- Spacious front facing Lounge
- Ideal first time buyer property
- Gas central heating and double glazed
- Excellent storage space



**TOTAL: 506 sq. ft, 47 m2**  
 1st floor: 506 sq. ft, 47 m2  
 EXCLUDED AREAS: STORAGE: 37 sq. ft, 3 m2, WALLS: 55 sq. ft, 6 m2  
Floor Plan Created By Cubicase App. Measurements Deemed Highly Reliable But Not Guaranteed.



## Directions

## Viewings

Viewings by arrangement only. Call 01417262111 to make an appointment.

## Council Tax Band

## EPC Rating:

C

Energy Efficiency Rating		
	Current	Potential
Very energy efficient - lower running costs		
(92 plus) <b>A</b>		
(81-91) <b>B</b>		
(69-80) <b>C</b>	77	80
(55-68) <b>D</b>		
(39-54) <b>E</b>		
(21-38) <b>F</b>		
(1-20) <b>G</b>		
Not energy efficient - higher running costs		
<b>Scotland</b>	EU Directive 2002/91/EC	